

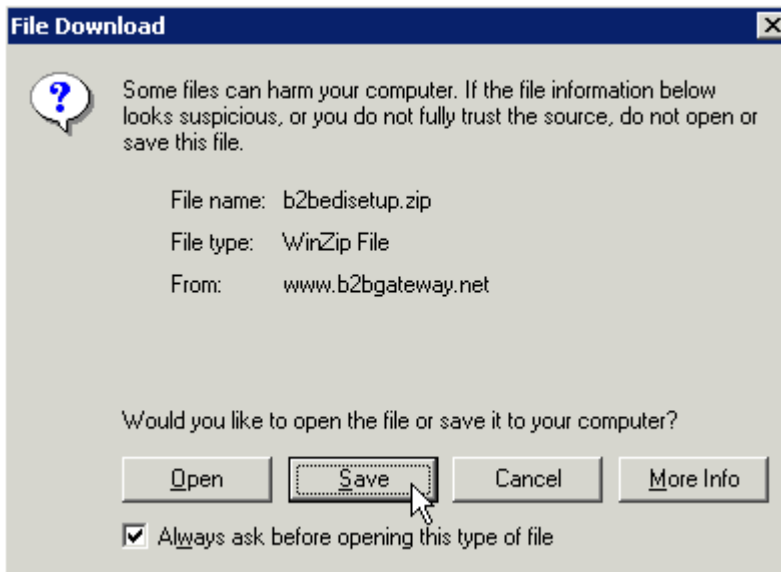
Introduction

This guide will take you through the steps required to download and install the B2BGatewayEDI client software. In order to download the software you will need an active Internet connection. To successfully complete the integration process, QuickBooks® will also need to be installed on the target machine.

Download

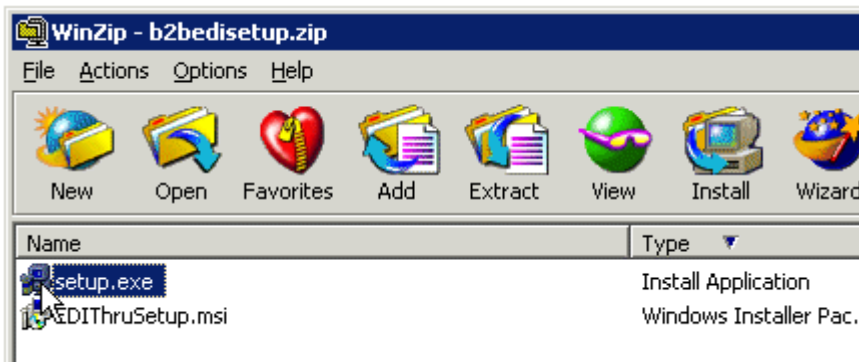
To download the B2BGatewayEDI setup files please click on the link below and save the zip file to your desktop when prompted.

<http://www.b2bgateway.net/b2bedisetaup/b2bedisetaup.zip>



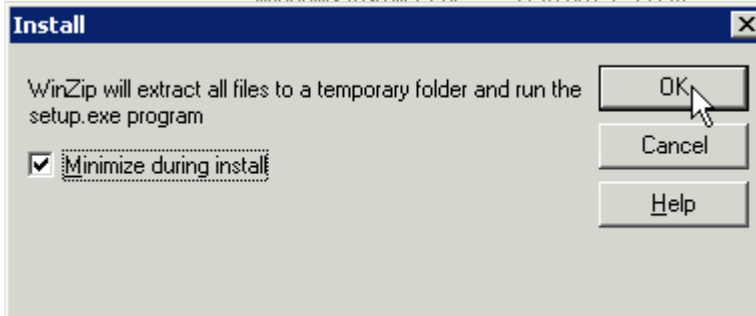
Installation

Once the file has successfully downloaded, open the zip file and run the setup.exe file that is inside by double clicking on setup.exe.

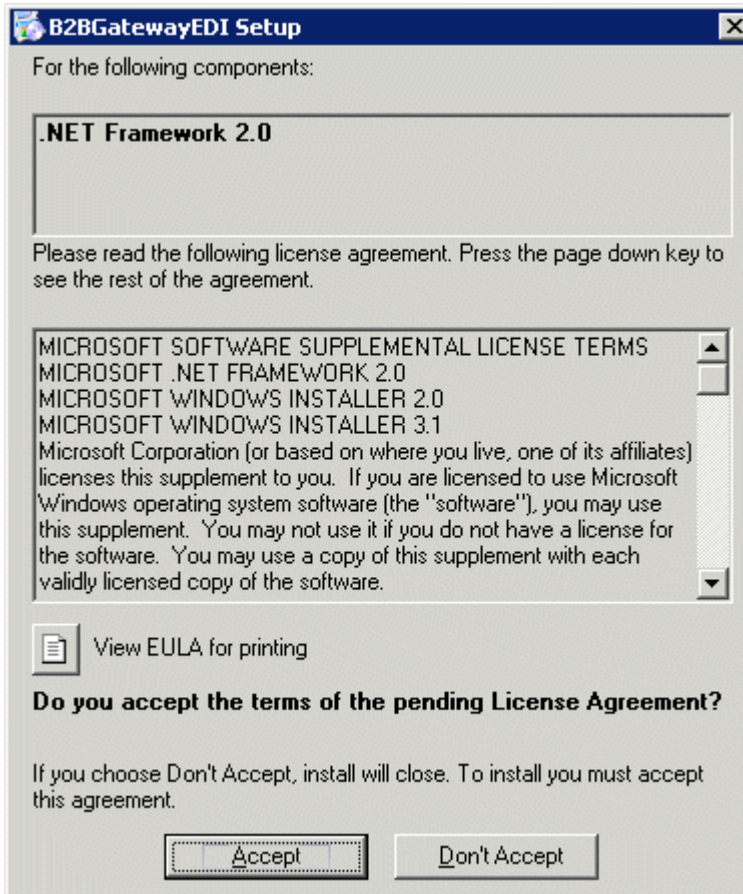


Installation cont...

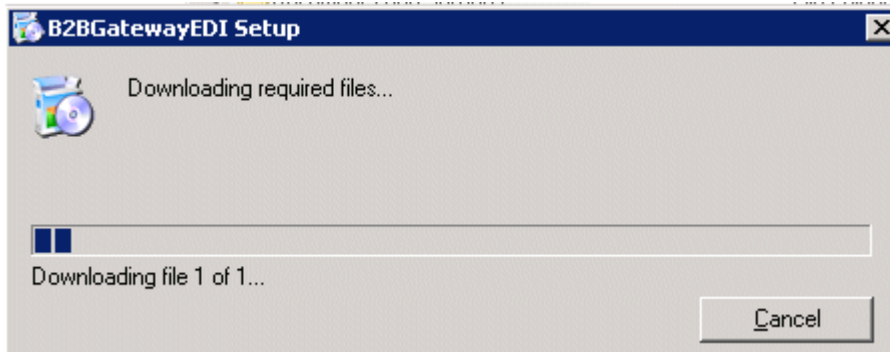
Click OK to the Install dialog when prompted.



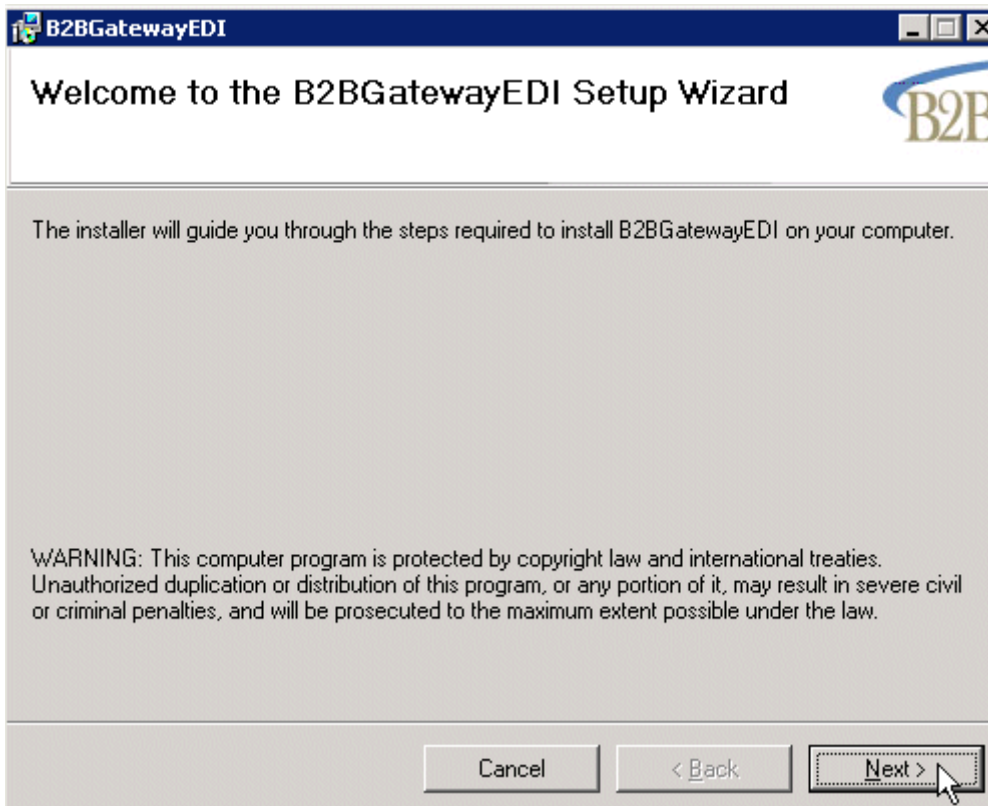
B2BGatewayEDI requires the .NET Framework 2.0. Click the Acept button if prompted to download and install .NET Framework 2.0.



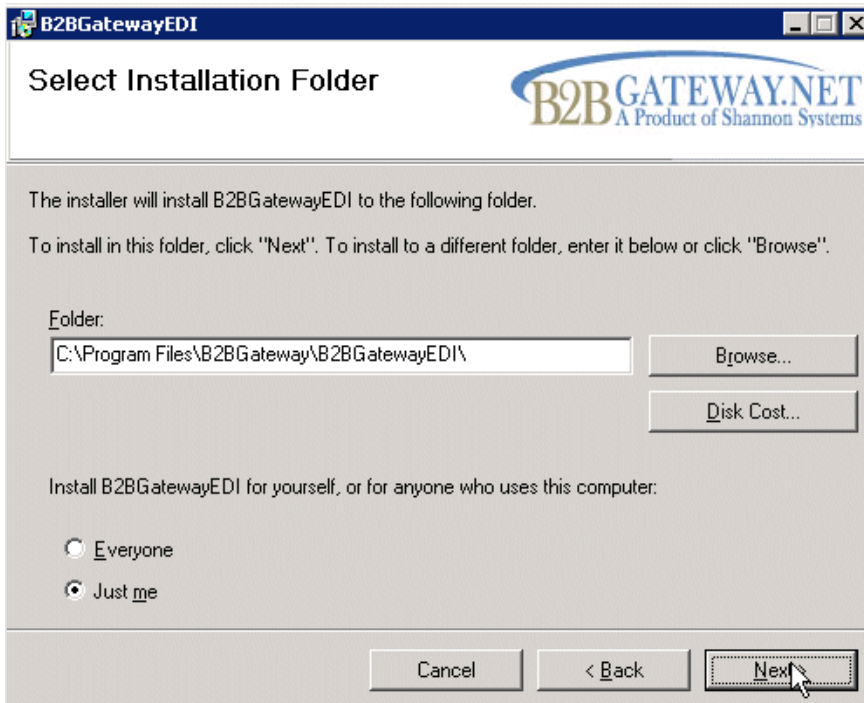
The required files will be downloaded and installed automatically.



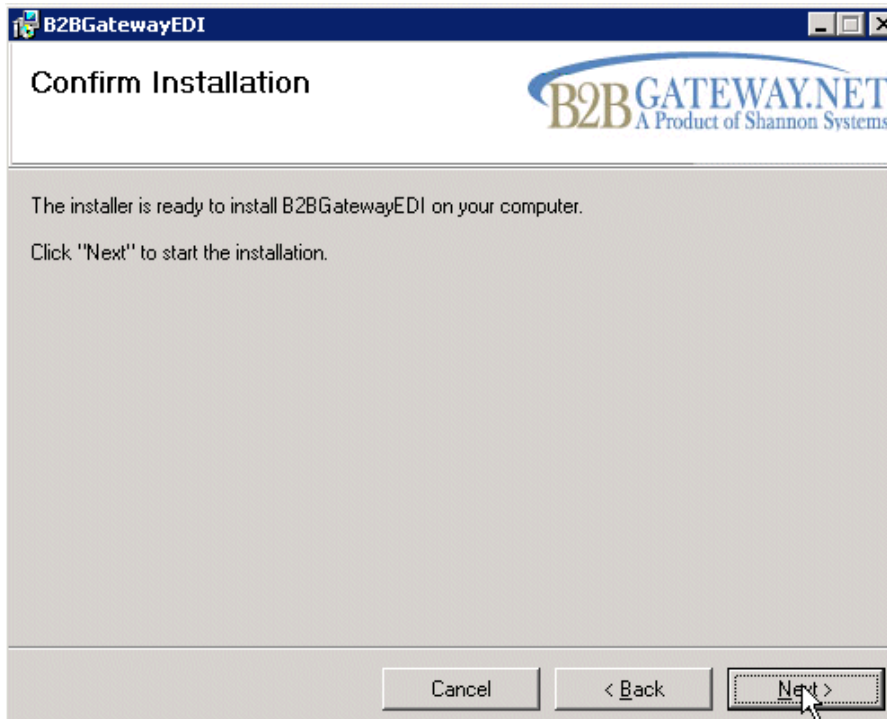
Once the files have completed downloading, click the Next button when prompted.



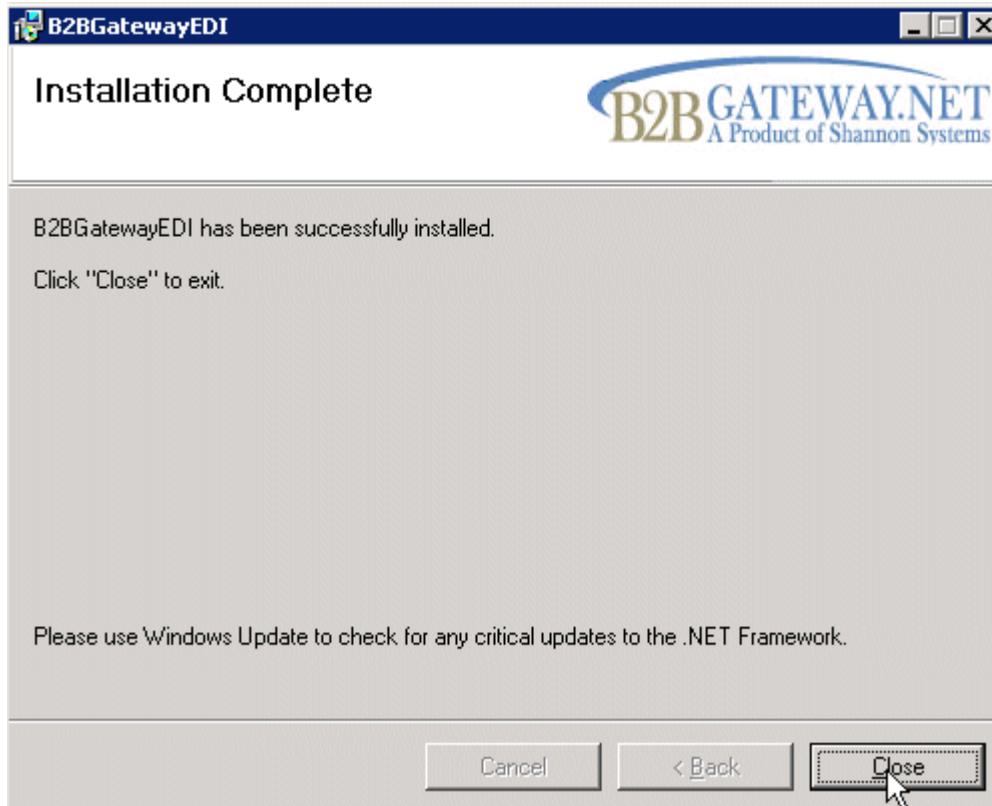
Click the Next button to accept the default location for installation, or click the Browse button to choose a preferred location.



After choosing an Install location, click the Next button to start the installation.



Once the installation has finished, click the Close button to exit.



After installation has completed **it is highly recommended that you run a windows update** to check for any security updates released for the .NET Framework 2.0 and other components.

The URL for this is subject to change, but at the time of this writing the URL for this is:

<http://update.microsoft.com/microsoftupdate/v6/default.aspx>

Please contact your Support Engineer if you encounter any issues or experience any errors during the installation process.